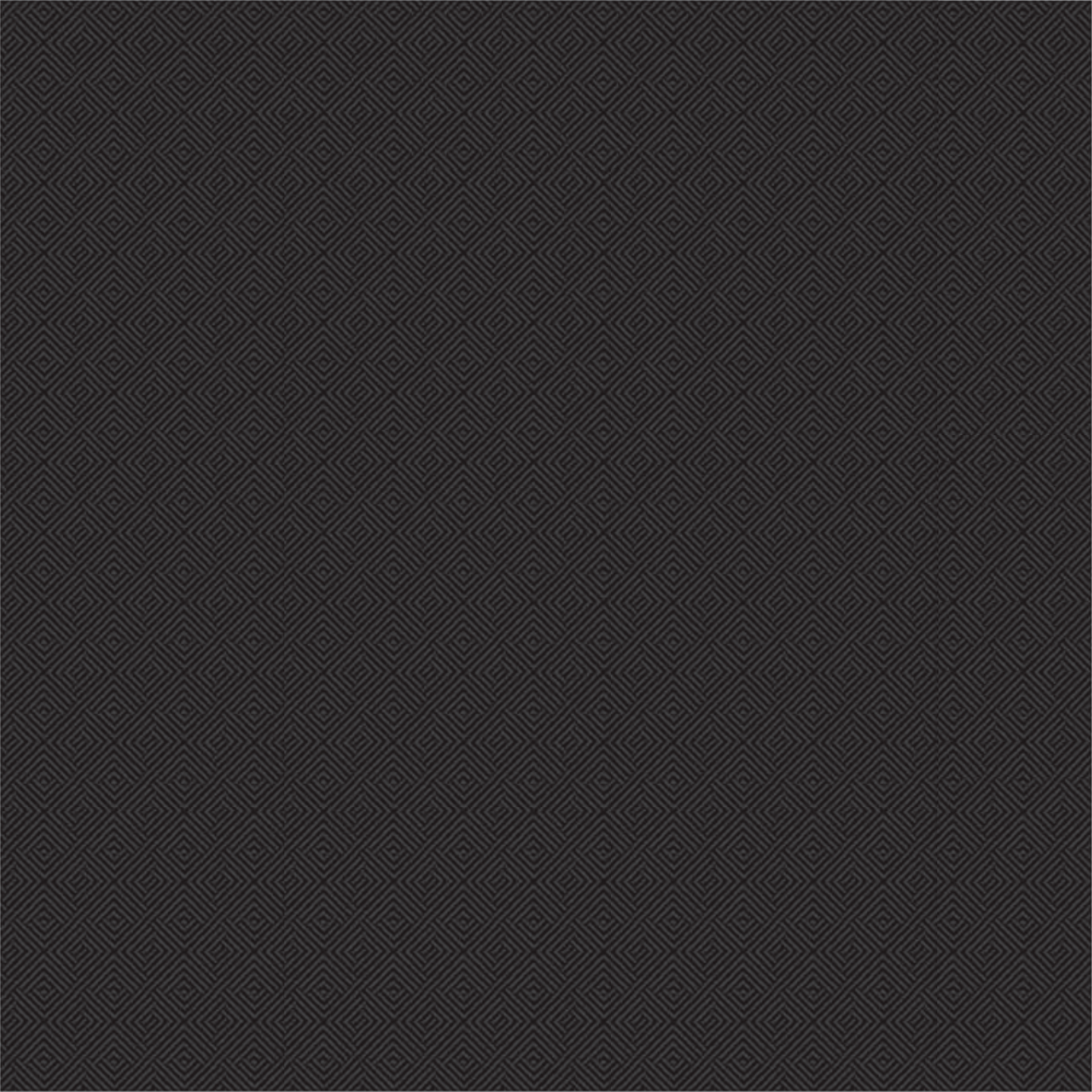




AT ePLACE

ELEVATED
LUXURY



CONNECTED TO EGLINTON SUBWAY & LRT

EXPERIENCE NEW HEIGHTS OF LUXURY AT MIDTOWN'S
MOST SPECTACULAR CONDOMINIUM RESIDENCE



DIRECT CONNECTION TO...

SPECTACULAR 360° CITY VIEWS



DIRECT CONNECTION TO...

THE BEST OF YONGE & EGLINTON

BE CONNECTED TO THE ENERGETIC HEART
OF MIDTOWN TORONTO



Endless premium shops and restaurants. World class transit and entertainment. Beautiful parks and recreation. With indoor connections to many of this neighbourhood's top amenities, you can be more connected to all of this at e2 Condos.

When the Crosstown LRT opens in 2021, e2 will be directly connected to one of the country's largest transit hubs making local, regional and national transit more convenient and connected to your front door.

“
**CONNECTED TO ePLACE,
SUBWAY & FUTURE LRT
AND THE YONGE EGLINTON
CENTRE, e2 OFFERS
INTEGRATED URBAN
LIVING AT ITS FINEST.**

”



DIRECT CONNECTION TO...

MIDTOWN'S FINEST PENTHOUSE SUITES

A LIMITED RELEASE OF
PRESTIGE RESIDENCES AT
YONGE & EGLINTON



Now available, the penthouse suites at e2 create a new standard for lavish midtown living. Spectacular views and sensational design define these elite midtown residences. Inside, these suites have been appointed with only the finest features and finishes – the ultimate accessories to your new designer lifestyle. Chef-inspired kitchens, elegant ensuite bathrooms and captivating living spaces invite you to an extraordinary experience of home.

DIRECT CONNECTION TO...

EXCEPTIONAL BUILDING AMENITIES

YOUR COMPLETE URBAN LIFESTYLE BEGINS AT e2



ARTIST'S IMPRESSION

Featuring over 13,700 sq. ft. of indoor amenity space, e2 provides an impressive selection of amenities exclusively for residents' use. The Grand Lobby is an inviting place to relax and unwind. A place where plush chairs and beautiful architectural detailing provide the perfect setting to work on your laptop or enjoy a takeout coffee from one of the many nearby cafes. A restaurant-inspired catering kitchen in the party room provides everything you need to entertain all your guests. There's also a games room, fitness centre, seasonal outdoor home theatre, kid zone, pet spa and more!



ARTIST'S IMPRESSION



DIRECT CONNECTION TO...

BREATHTAKING OUTDOOR SPACES

ENJOY EXPANSIVE OUTDOOR LIVING WITH THESE PREMIUM AMENITIES



**THERE'S ALSO
A GAMES ROOM,
SEASONAL OUTDOOR
HOME THEATRE,
PET WASH
AND MORE!**

One of the best parts of life at e2 is the incredible outdoor spaces available here. There's 7,448 sq. ft. of outdoor terrace that's perfect for barbecues, garden parties, or just quiet family dinners. On the main level the 4,757 sq. ft. of outdoor park is perfect for dog owners. You'll never lose your connection to the natural world when you call e2 home.



*THE 4,757 SQ. FT.
OF OUTDOOR PARK
IS PERFECT FOR
DOG OWNERS.*



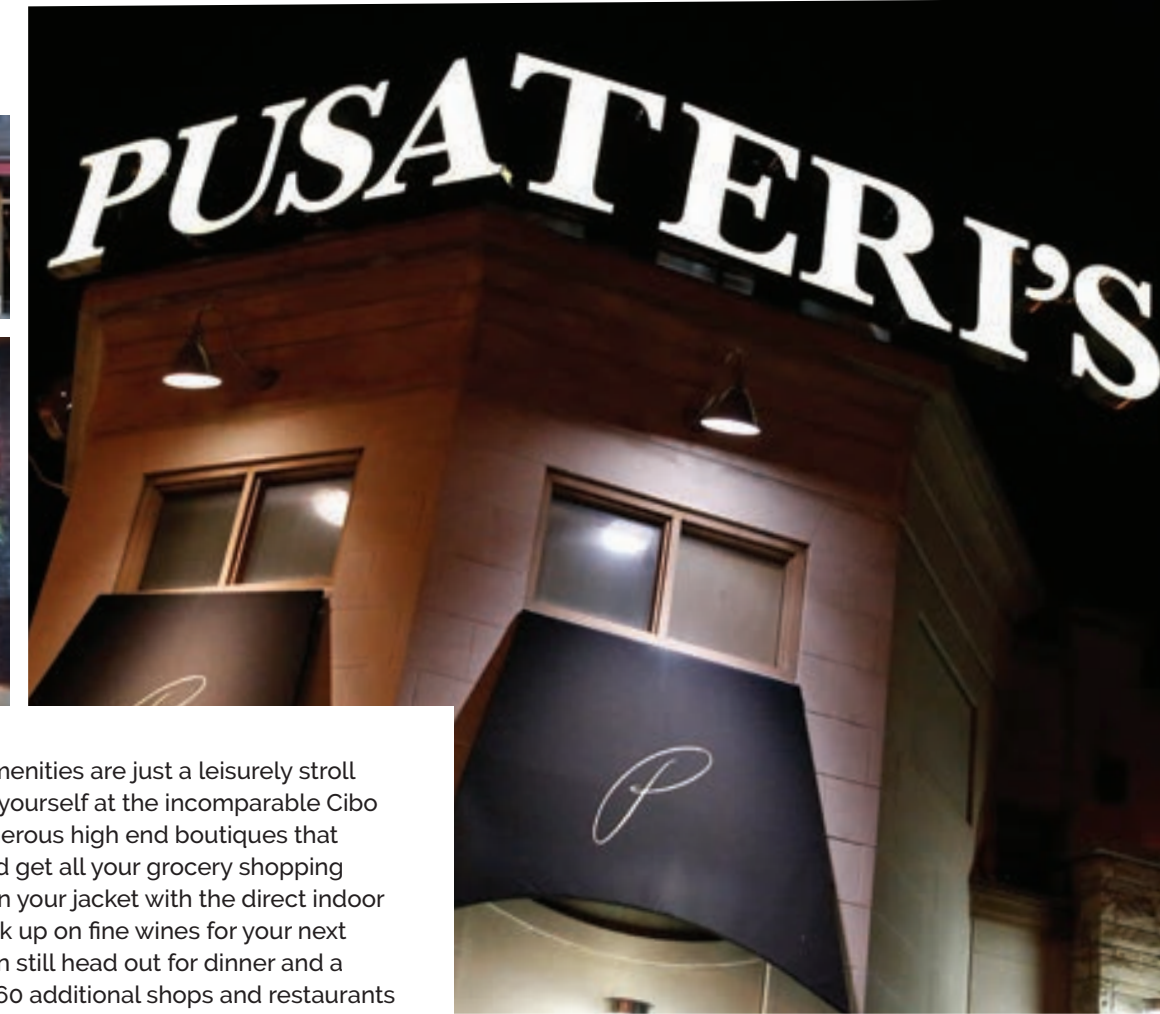
DIRECT CONNECTION TO...

MIDTOWN'S FINEST AMENITIES



OVER **60**
SHOPS &
RESTAURANTS

ENJOY THE NEIGHBOURHOOD'S #1 SHOPPING & DINING
DESTINATION WITHOUT EVER STEPPING OUTSIDE
AT THE YONGE EGLINTON CENTRE



At e2 all of midtown's most premium amenities are just a leisurely stroll away. Step out your front door and find yourself at the incomparable Cibo Wine Bar in just moments. Explore numerous high end boutiques that are right up the street, or stay inside and get all your grocery shopping done without ever even having to put on your jacket with the direct indoor connection to Metro Supermarket. Stock up on fine wines for your next party at LCBO. Blizzard outside? You can still head out for dinner and a movie with Cineplex theatres and over 60 additional shops and restaurants directly connected to your home at e2.



DIRECT CONNECTION TO...

ePLACE

A VISIONARY NEW LIVE, WORK, PLAY COMMUNITY AT YONGE EGLINTON

Those who live at e2 can enjoy direct indoor access to even more great retail when the shops at ePlace open their doors. Upon completion, phase 1 of ePLACE will hold over 1 million square feet of commercial and retail space, including TD's new Flagship Office, PieCo, and other great amenities. Of course, ePlace is also a complete residential community. A place where numerous high end apartment and condominium residences create the basis for a vibrant community atmosphere unlike any other. ePlace is contributing to Yonge and Eglinton rising to be one of Canada's most prominent transit, retail and residential hubs. It's a true live, work, shop, play community.



TOP RATED TORONTO LIVING

WALK SCORE

99 

NEAR PERFECT WALKABILITY




60+ RESTAURANTS & CAFES WITHIN 10 MINS



13+ PARKS NEARBY


80+ SHOPS & SERVICES WITHIN 10 MINS








BIKE SCORE

89 

BIKER'S PARADISE

11 

PRIVATE SCHOOLS INCLUDING HAVERGAL COLLEGE & UPPER CANADA COLLEGE

16 

CATHOLIC & SECONDARY SCHOOLS NEARBY

DIRECT CONNECTION TO...

EGLINTON SUBWAY & THE NEW CROSSTOWN LRT

e2 IS CONNECTED TO EPLACE — TORONTO'S FIRST LIVE, WORK PLAY COMMUNITY WITH DIRECT CONNECTION TO BOTH LRT & SUBWAY!



Direct indoor access to Eglinton Subway and the New Crosstown mean that you can get to all of the city's best destinations without ever stepping outside.



THE YONGE-UNIVERSITY LINE 1 SUBWAY LINE CAN WHISK YOU INTO THE DOWNTOWN CORE IN LESS THAN 10 MINUTES.

“ IDEAL FOR TRANSIT ORIENTED TORONTONIANS THAT WANT TO LIVE IN ONE OF TORONTO'S FINEST NEIGHBOURHOODS. ONLY A 9 MINUTE SUBWAY RIDE TO DOWNTOWN. ”



PLUS, THE NEW CROSSTOWN LRT WILL RUN FROM MOUNT DENNIS IN THE WEST TO KENNEDY IN THE EAST. THE LINE WILL HAVE 25 STATIONS WHEN IT OPENS IN 2021, AND THEN EVENTUALLY EXPAND TO 61 STATIONS. THE LRT WILL ALSO FEATURE CONNECTIONS TO THE BARRIE GO, KITCHENER GO, STOUFFVILLE GO AND UNION PEARSON EXPRESS TRAIN.

DIRECT CONNECTION TO...

MIDTOWN'S MOST TRUSTED TEAM

METROPIA AND CAPITAL DEVELOPMENTS HAVE CREATED MORE THAN 2,500 UNITS
COMBINED IN THE YONGE AND EGLINTON NEIGHBOURHOOD.



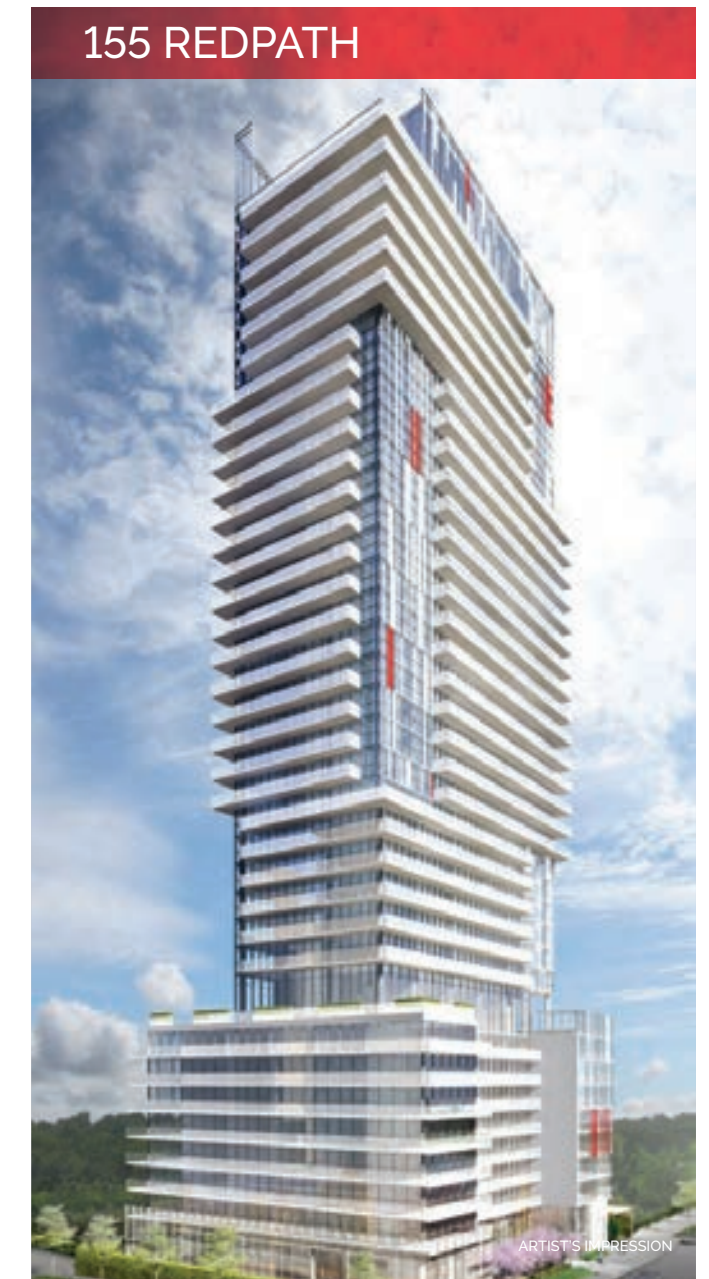
Metropia is a privately owned and highly respected real estate developer creating authentic Communities in both the Greater Toronto Area and Calgary. Metropia focuses on community building, urban renewal and design innovation. Metropia is a product of Howard Sokolowski's vision to create one of Canada's leading real estate development companies. Over the past 30 years Howard and executive team member David Spiegel have led the development of over 25,000 homes and set a new standard for customer satisfaction in the industry.



Capital Developments is an industry leading Canadian real estate development company, with international roots. We believe in finding partners that get it. Working with those that care as much as we do. And developing amazing projects with meaningful connections. With years of experience, we've learned that architecture, location, interior design, glass, metal and concrete all matter. But we've also learned that personal connections, trust and relationships are the things we really build.



Founded in 1993, RioCan REIT is Canada's largest real estate investment trust primarily focused on retail. The company's core strategy is anchored around ownership and management of a diverse national retail portfolio. It includes community-oriented shopping centres, new format power centres and a rapidly expanding collection of mixed-use communities in Canada's six major markets.



METROPIA



RIO CAN
LIVING